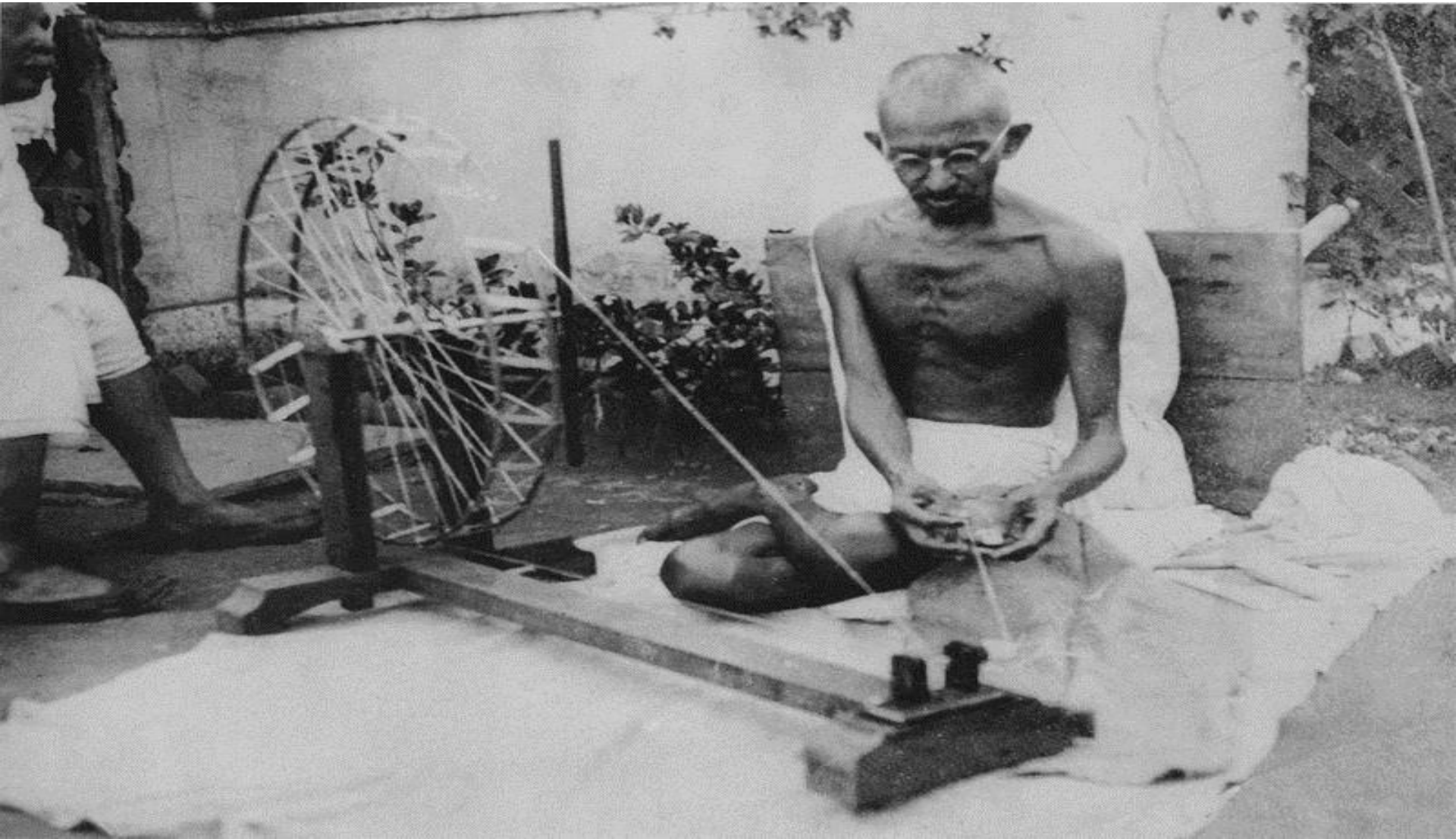
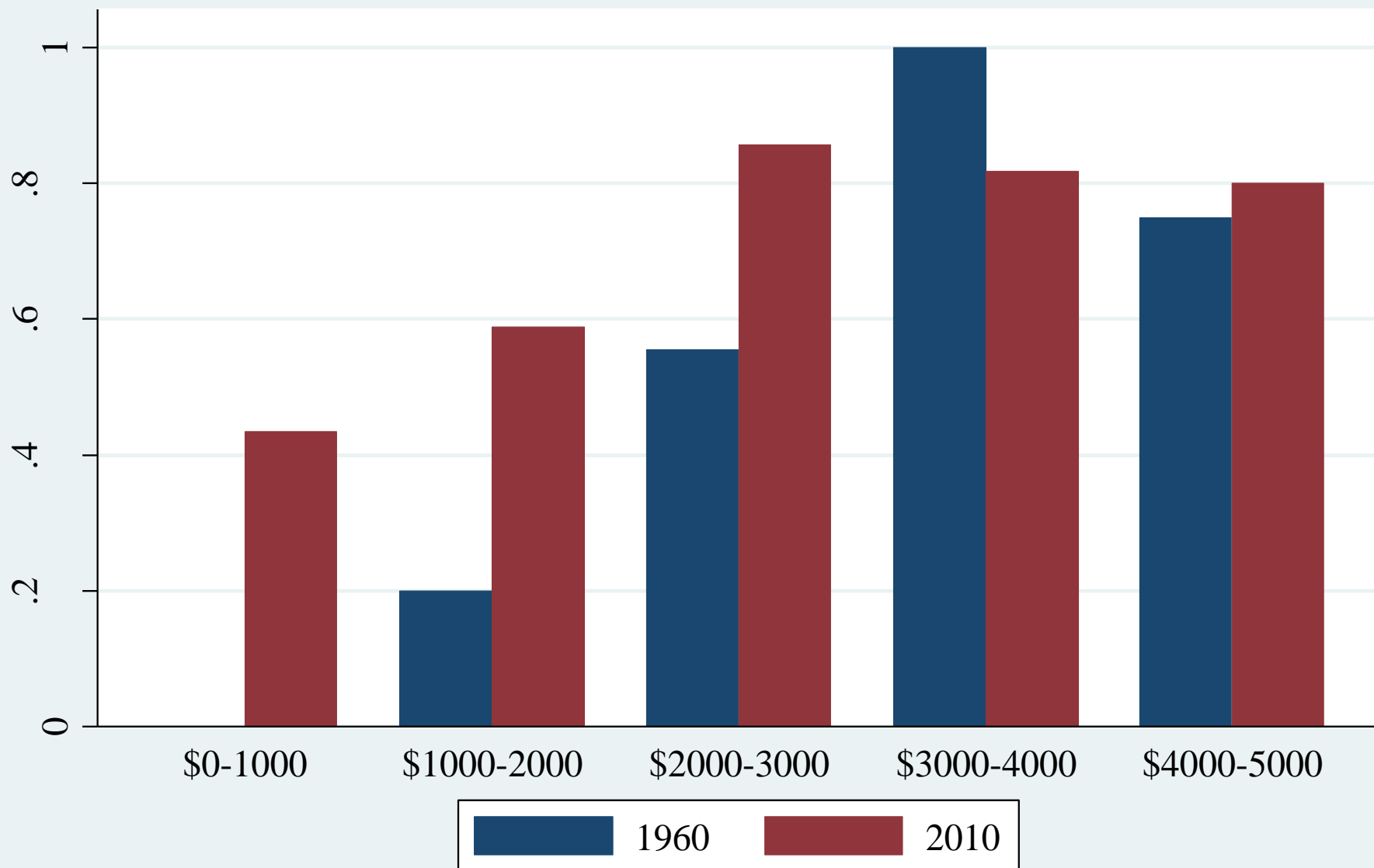


“I regard the growth of cities as an evil thing,  
unfortunate for mankind and the world. ”



# Share of Countries over 1/3 Urbanized, by GDP per Capita (2012 \$) 1960 and 2010



Source: World Bank

# The Strength of Slums

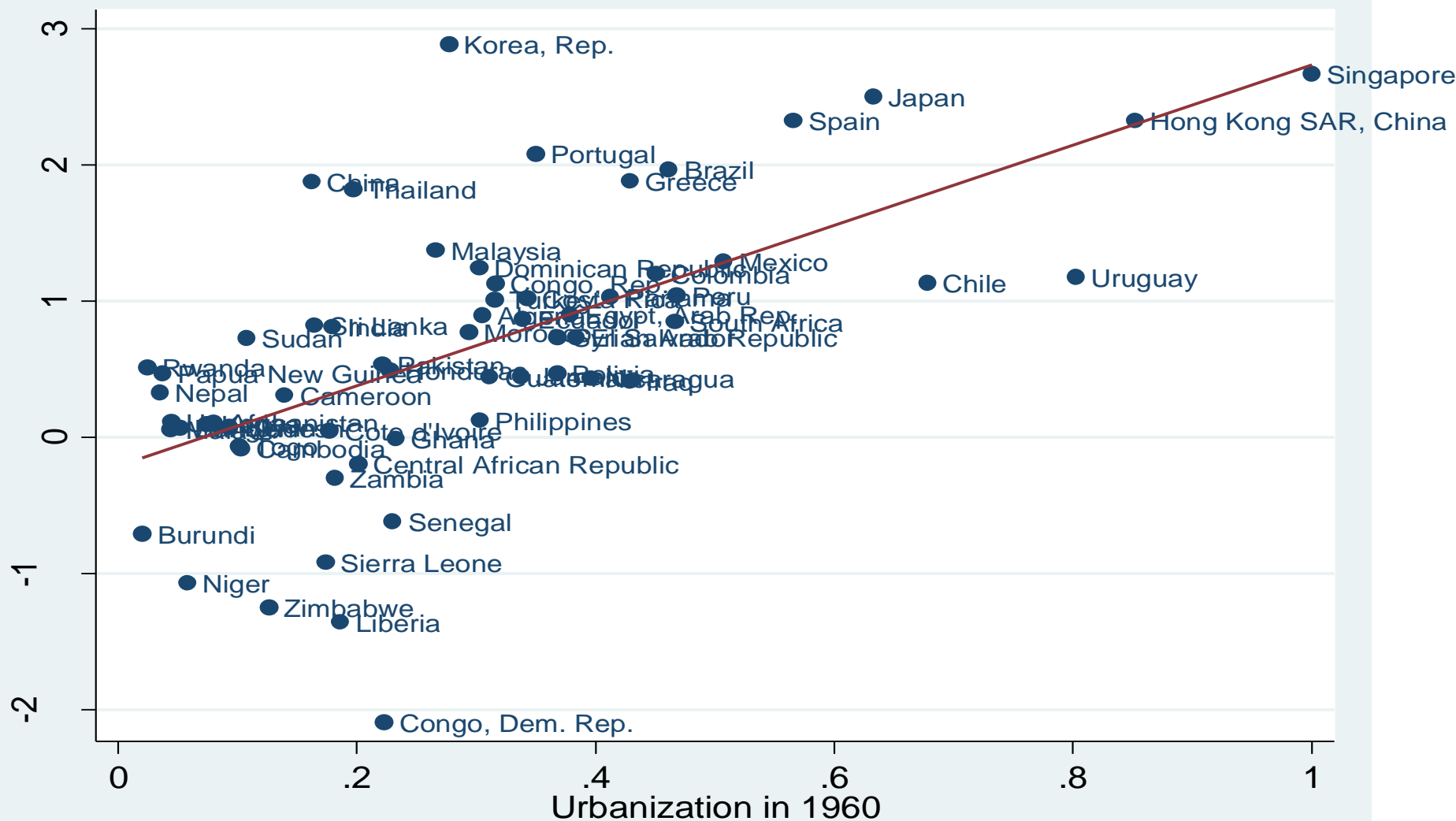




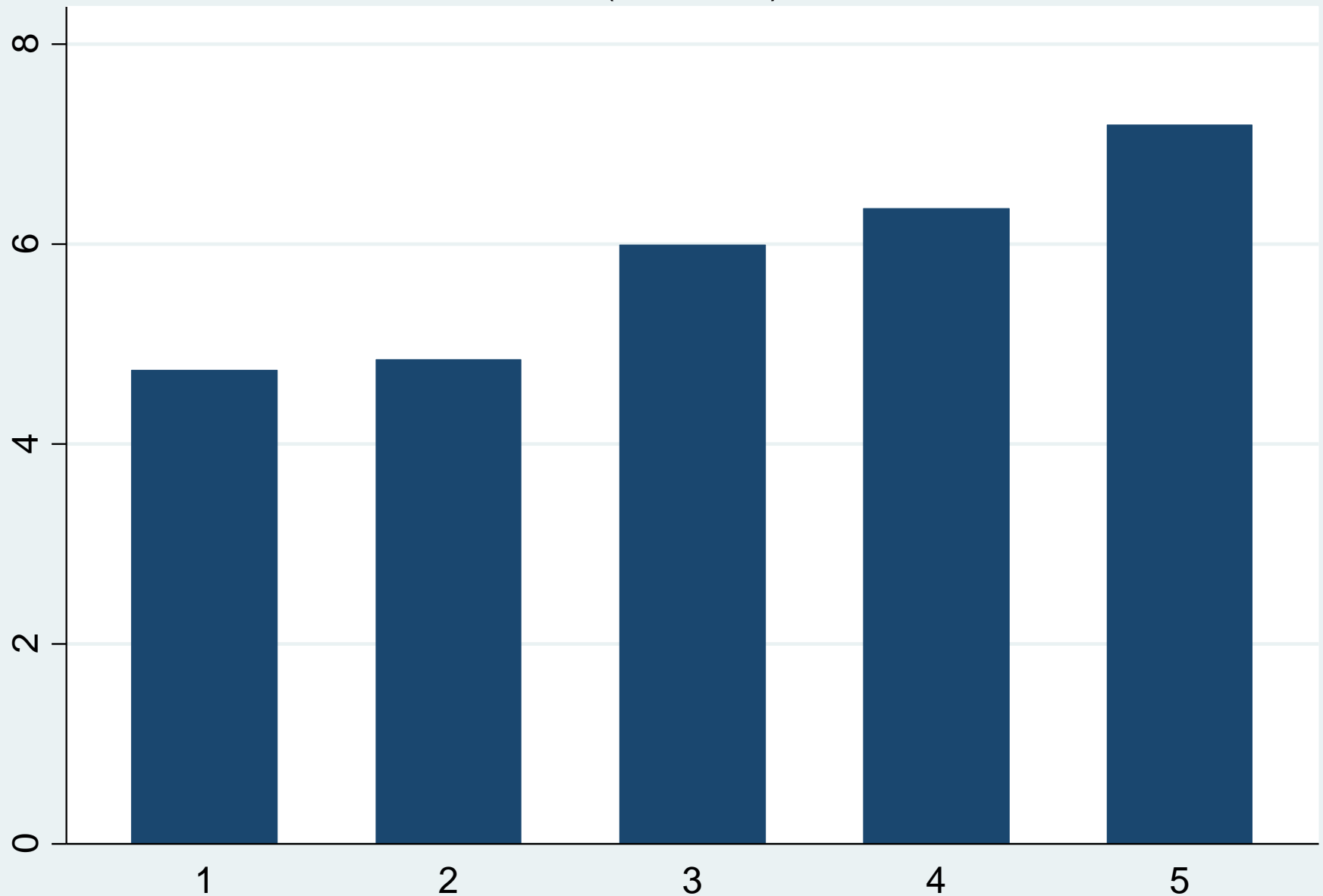
● Log of P.C. GDP 2010 PPP

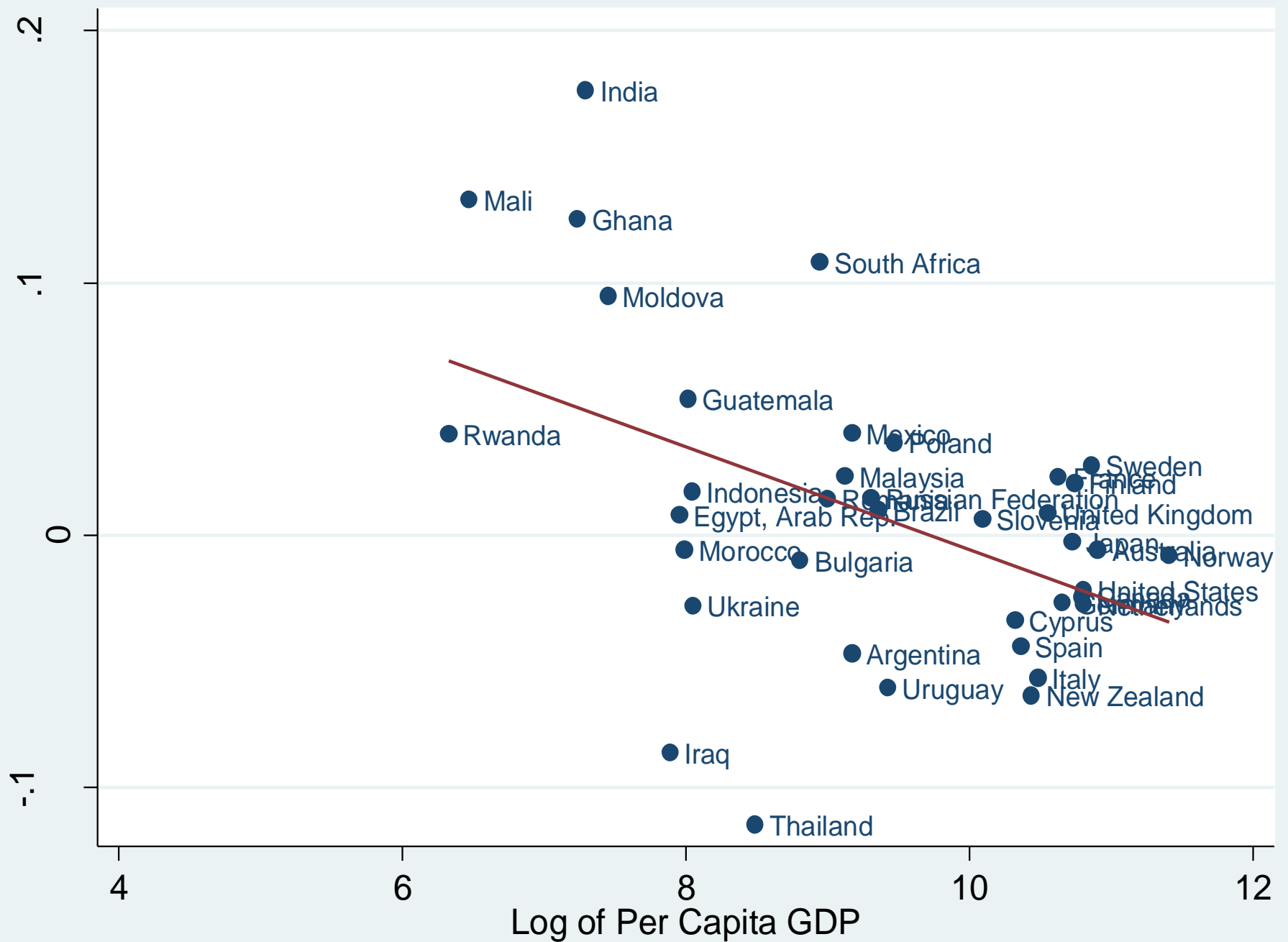
— Fitted values

# Per Capita GDP Growth 1960-2010 (Poor Countries < \$5000 PC GDP)



Life Satisfaction by Percent Urbanization  
(Quintiles)







# The Urban Triad



The Economic Magic of Human Interaction by חדוה שנדרוביץ

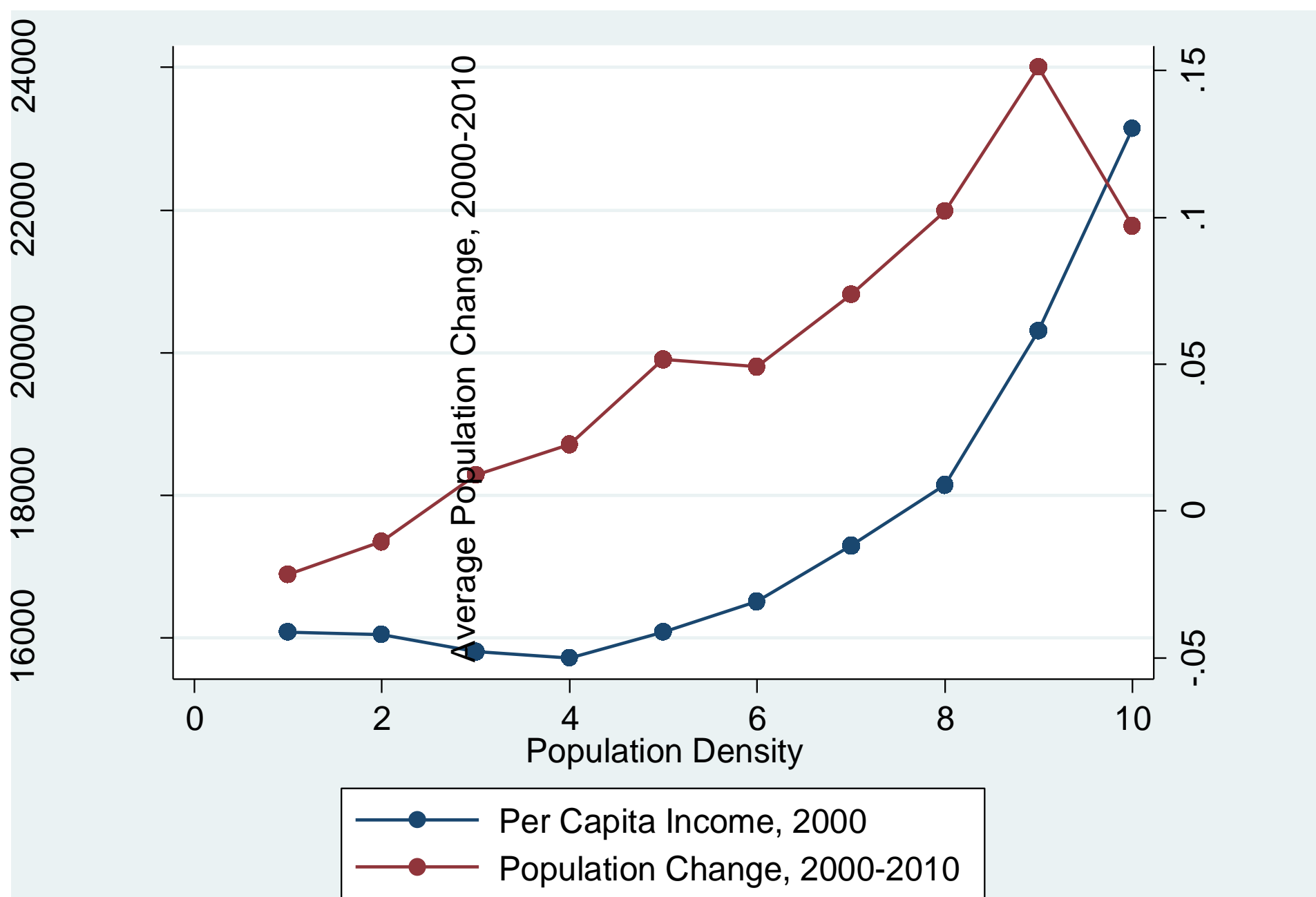


Government battling the Demons of Density



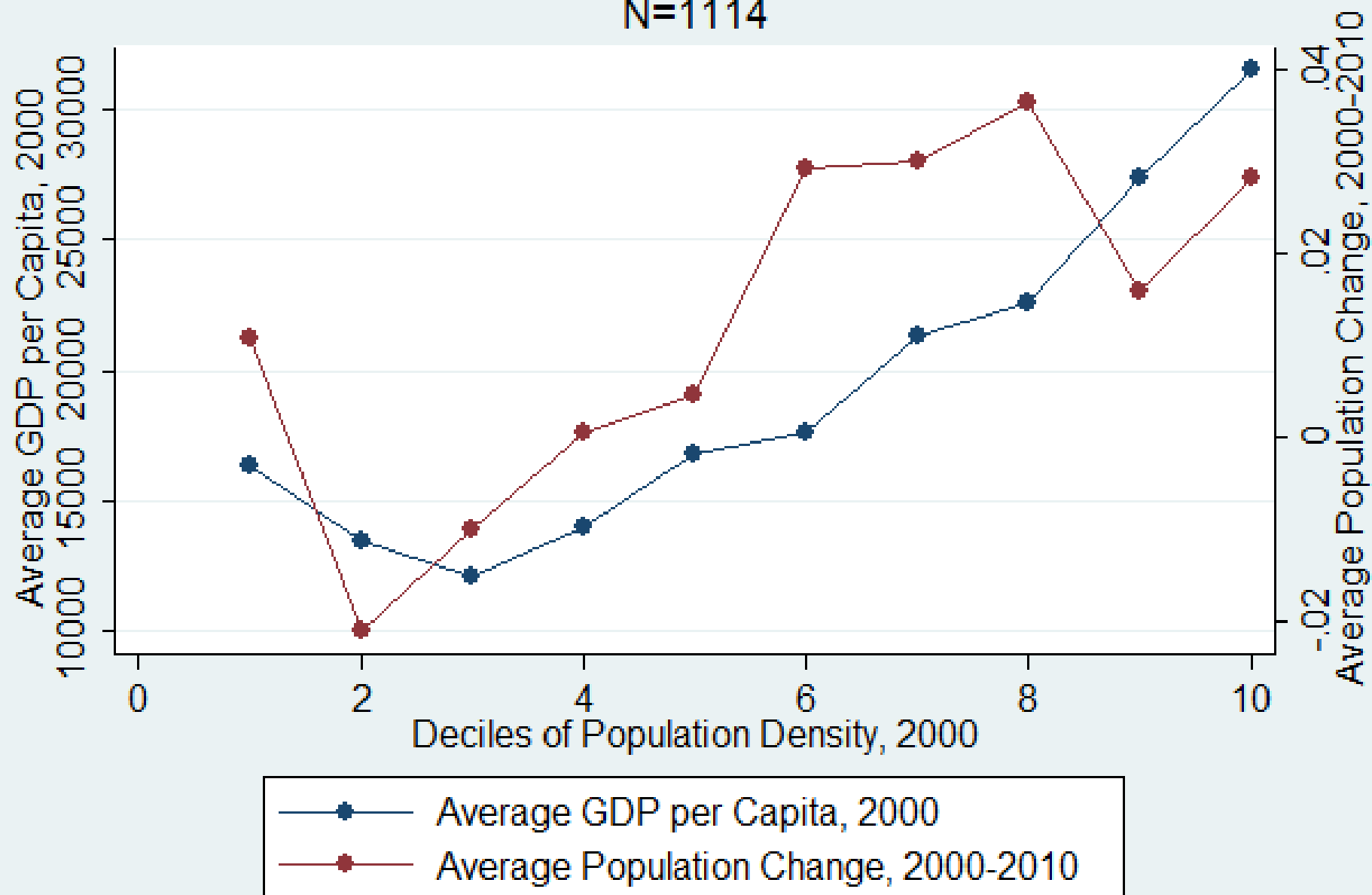
The Physical City by rulto





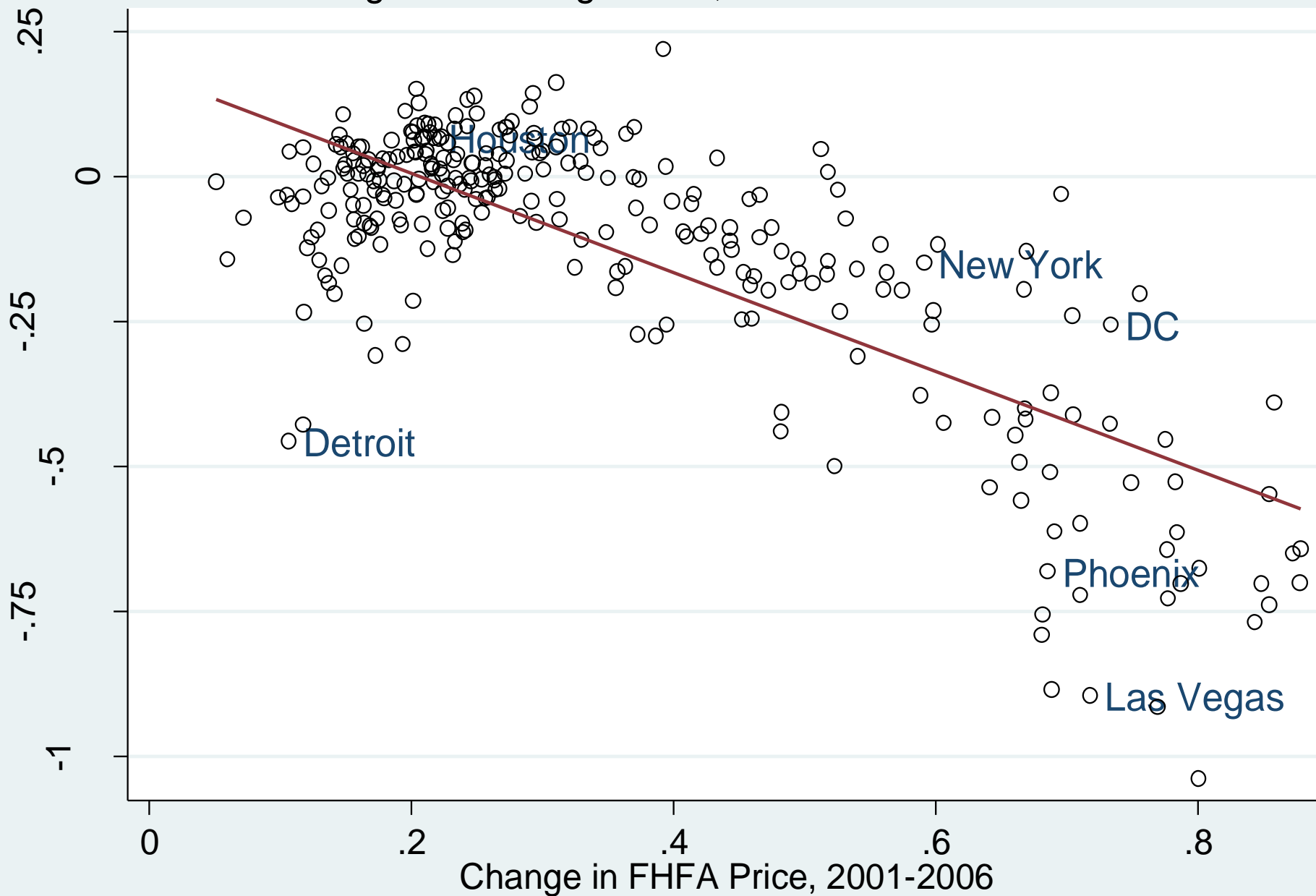
Source: U.S. Census

# EUROPE, NUTS3 N=1114

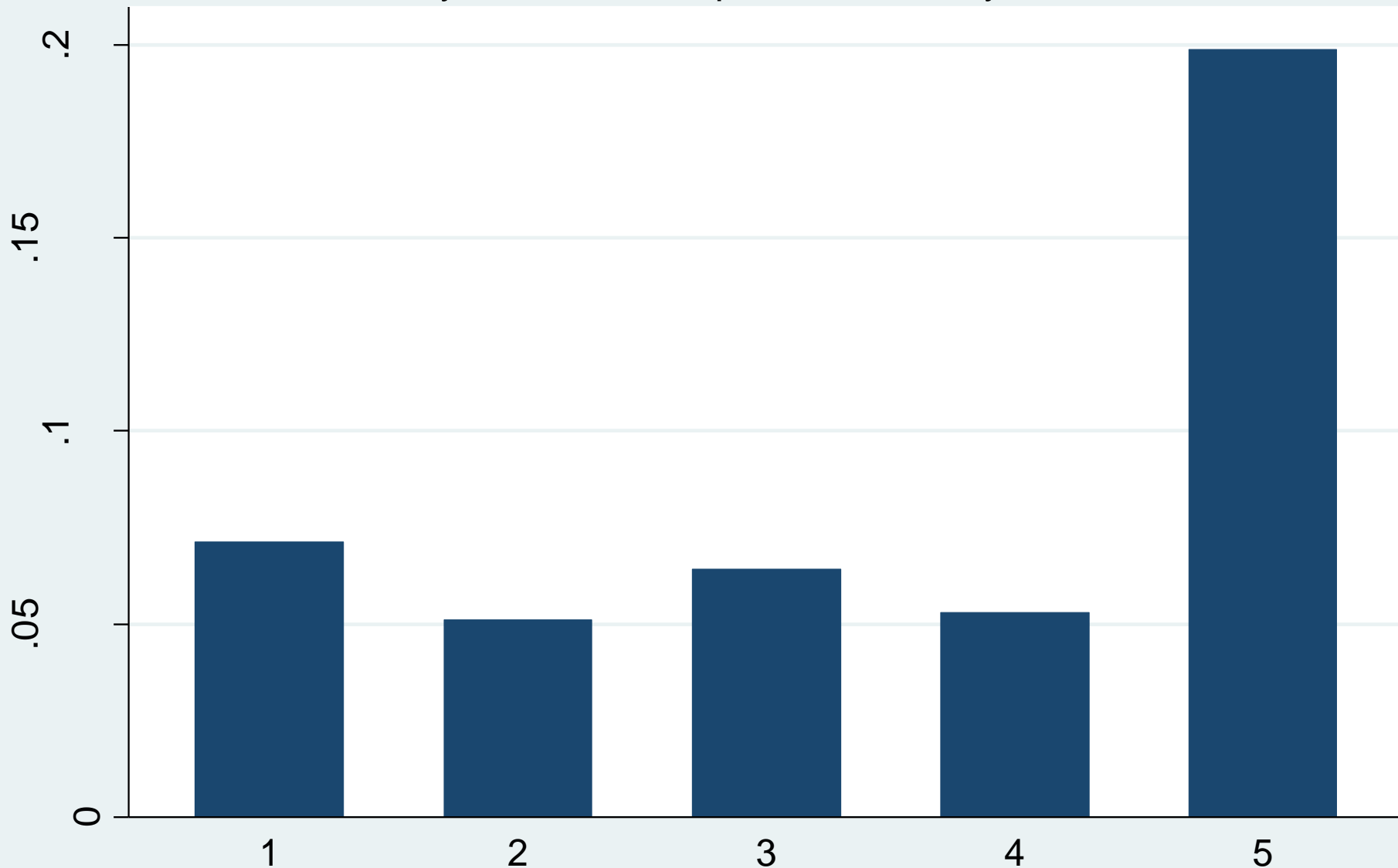


Source: Eurostat

Change in Housing Prices, 2001-2006 vs. 2006-2011



# Change in FHFA, 1996-2012 by Quintile of Population Density, 2010



Note: For MSAs with populations greater than 250,000 in 2010.



**FINAL** **DAILY NEWS** **15¢**  
NEW YORK'S PICTURE PAPER  
WEDNESDAY, MAY 12, 1976

# FORD TO CITY: DROP DEAD

***Vows He'll Veto Any Bail-Out***



**Abe, Carey  
Rip Stand**

***Stocks Skid,  
Dow Down 12***

Three pages of photos  
 begin on page 10. Last page  
 of Ford's speech on page 16

Cities are so monumental that we easily forget how fast they can fall—and rise. In the 1970s, New York verged on bankruptcy; President Ford refused to bail it out (left), and President Carter toured the grim ruins of the South Bronx (above). Three decades before these iconic images, Gotham had been an urban paragon, and three decades after them, it is again.

[Art 1:] *New York Daily News Archive / Getty Images*

[Art 2:] *Teresa Zabala / The New York Times / Redux Pictures*







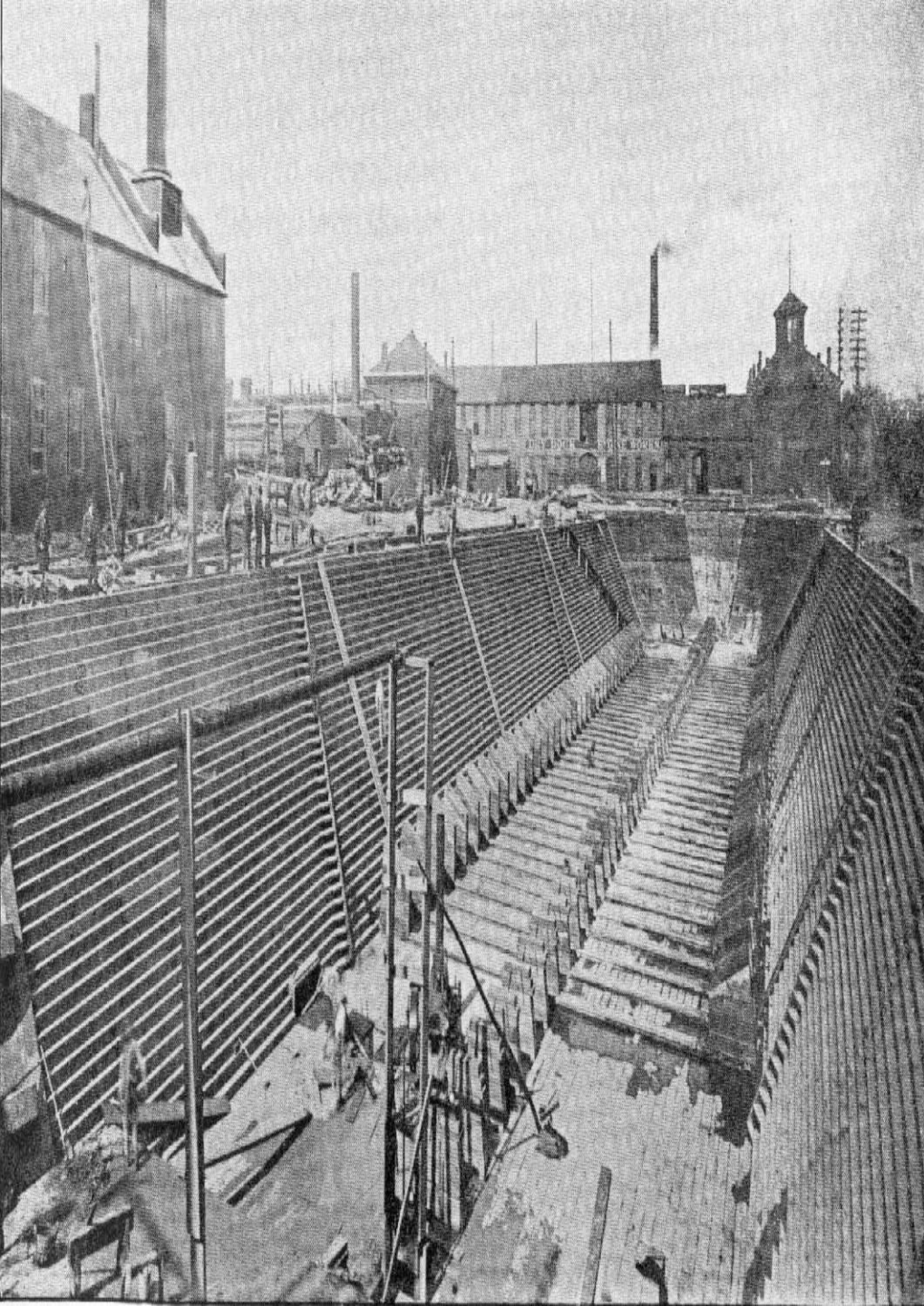
The Chicago Home Insurance Building, built in 1885, is widely considered the world's first metal-framed skyscraper. This technology would come to dictate the shape of most cities in the twentieth century and beyond.

*Chicago History Museum/Getty Images*

Until nearby commercial structures began to dwarf it in 1890, Trinity Church had been New York's tallest building for forty years. The two buildings to the church's left held that honor for thirty years until they were destroyed in a terrible attack that ultimately illustrated the resilience of a great city.

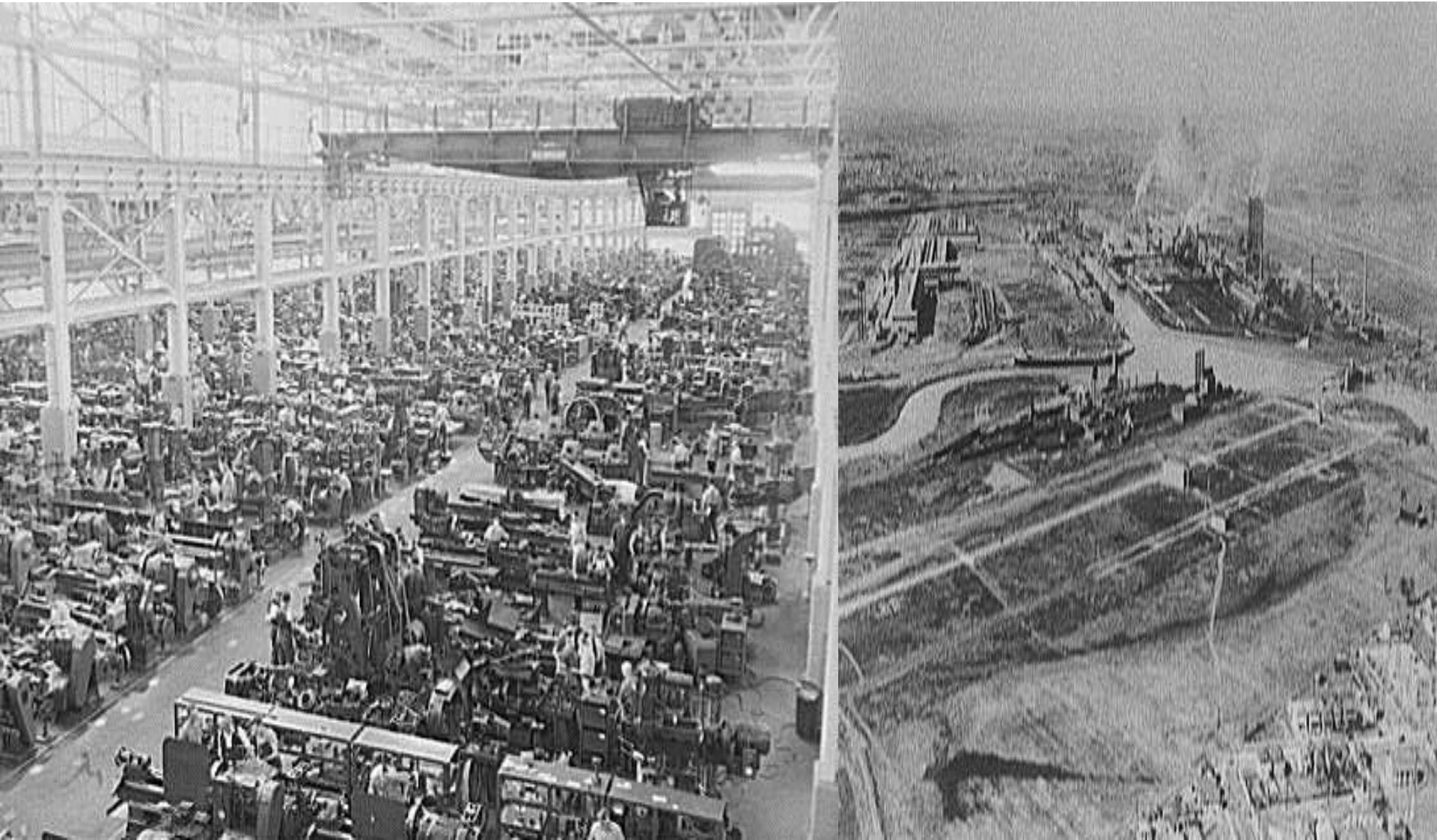
*Jeff Greenberg/ World of Stock*



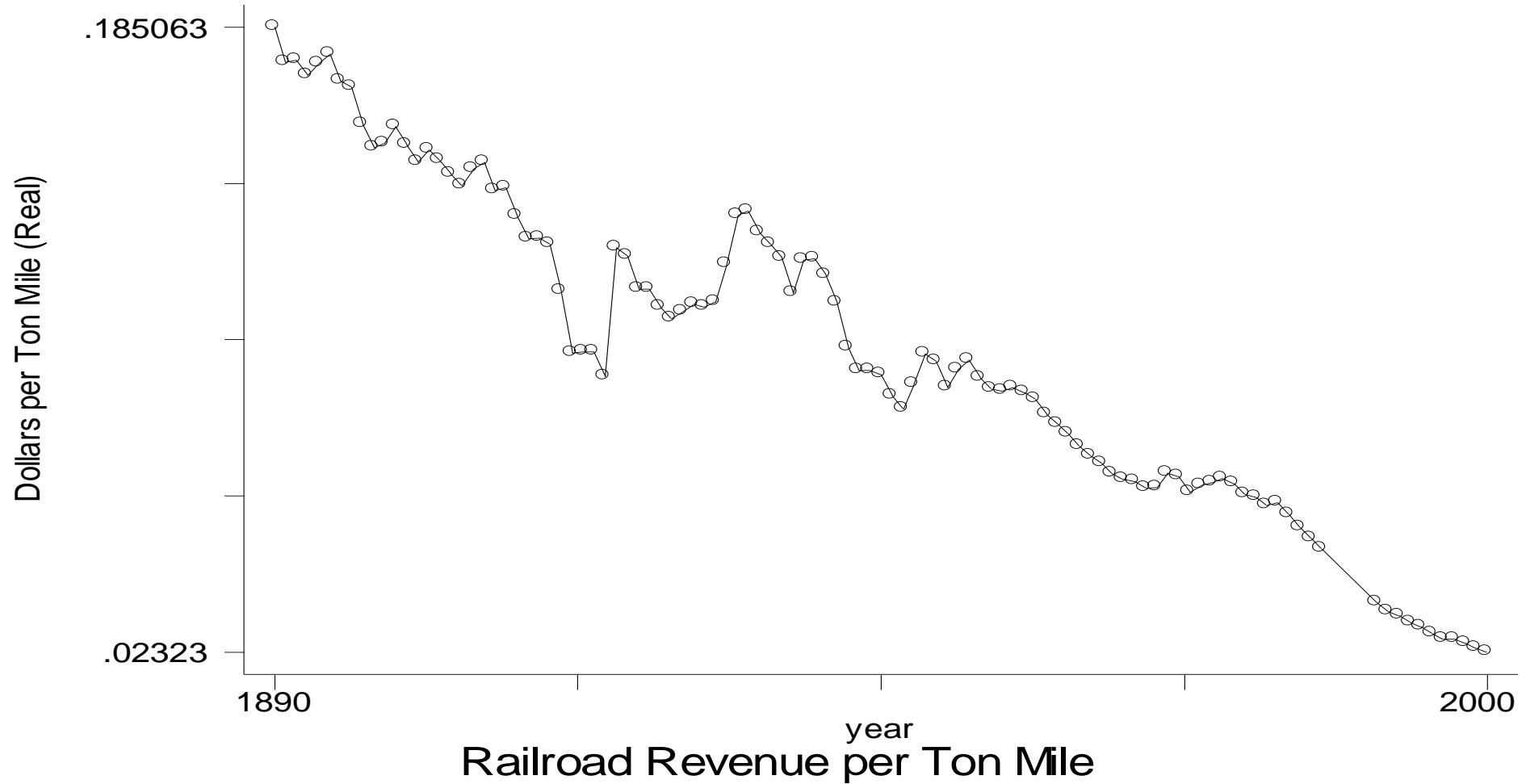




# Ford's Big Idea (River Rouge)

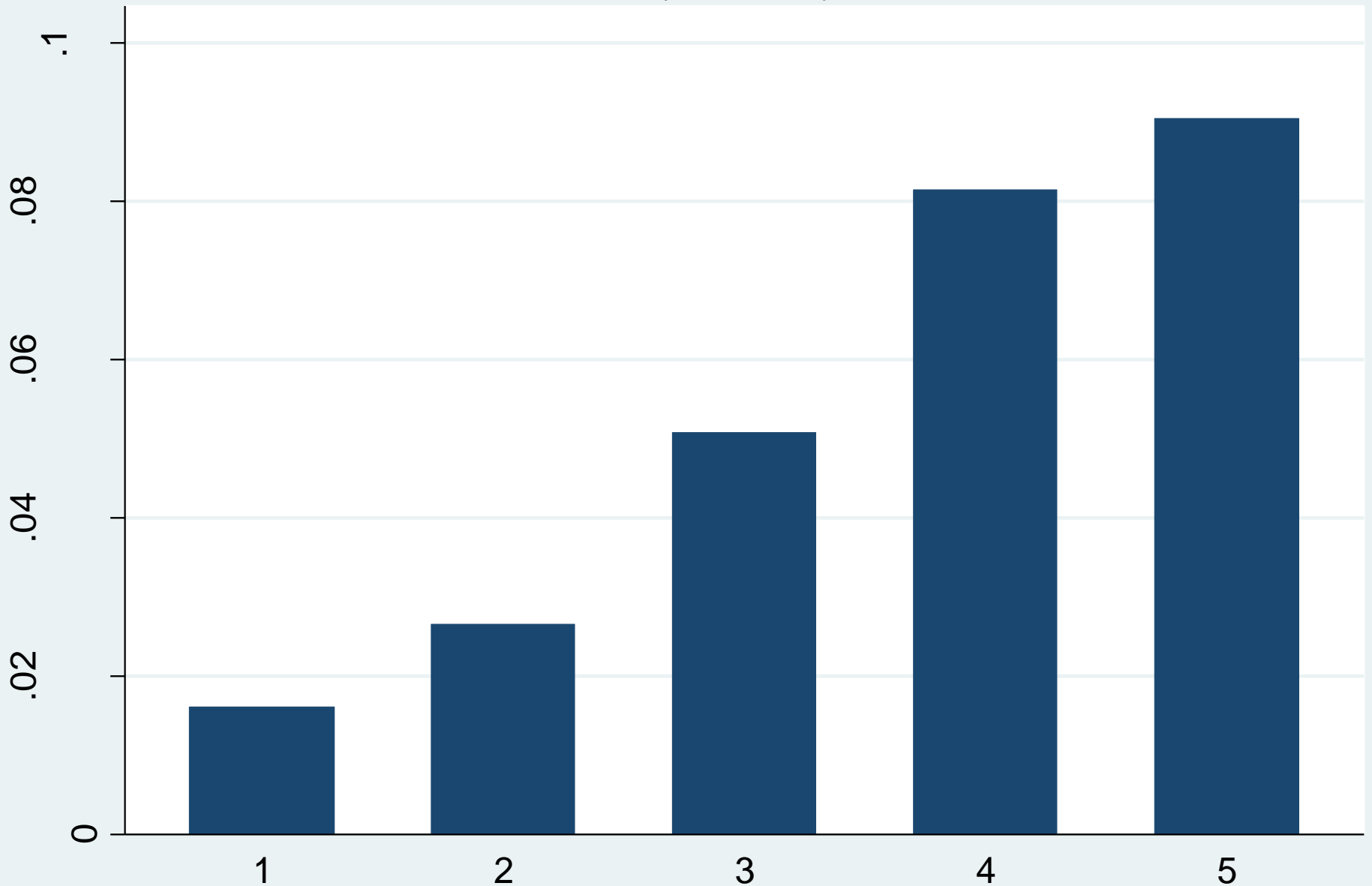


# The Decline of the Costs of Moving Goods





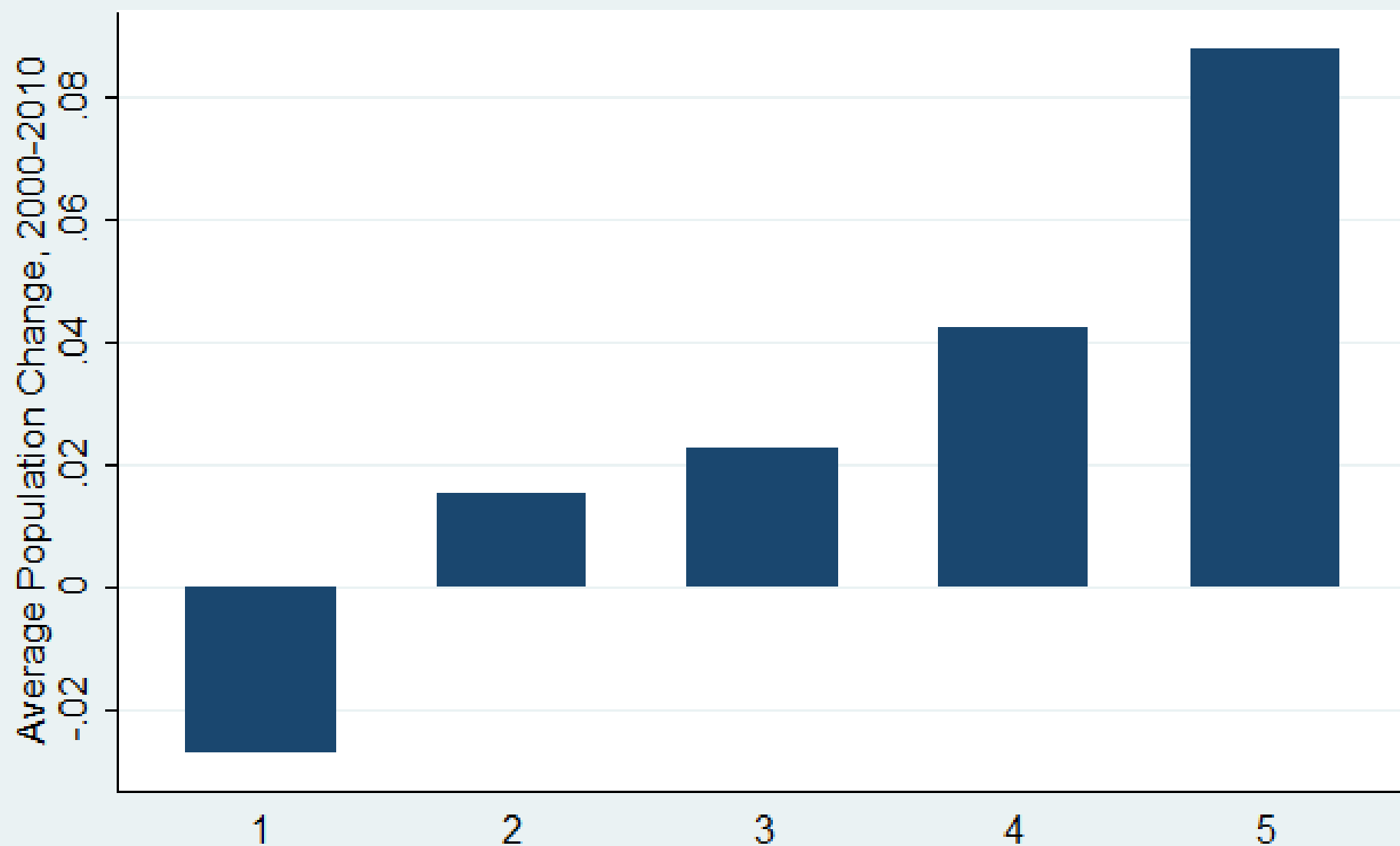
Average Population Growth by Average January Temperature  
(Quintiles)



# Population Growth over Quintiles of January Temperature

## EUROPE, NUTS3

N=169



Source: Eurostat & European Climate Assessment



Levittown, New York, provided thousands of mass-produced homes that helped America rebuild itself around the car.

*Hulton Archive/ Getty Images*

The Woodlands, outside Houston, shows how much more luxurious and sylvan large-scale suburban development has become since Levittown. Unfortunately, the expansion of the exurbs has lead to more carbon intensive lifestyles. All that greenery is really pretty brown.

© Ted Washington [per permission grant]



City	1950 Pop.	2010 Pop.	Change
New York	7,891,957	8,175,133	+4 %
Chicago	3,620,962	2,695,598	-26%
Philadelphia	2,071,605	1,526,006	-26%
Los Angeles	1,970,358	3,792,621	+92%
Detroit	1,849,568	713,777	-61%
Baltimore	949,708	620,961	-34%
Cleveland	914,808	396,815	-56%
St. Louis	856,796	319,294	-63%
Washington	802,178	601,723	-25%
Boston	801,444	617,594	-23%



Detroit's 1967 riot destroyed more than two thousand buildings and came to symbolize the decline of that once-great city. *Rolls Press/Popperfoto/Getty Images*



Detroit tried to reverse its decline  
with foolish investments like its  
People Mover, which here glides over  
essentially empty streets.

*Dennis MacDonald/ World of Stock*



Will the last person to leave Seattle  
please turn out the lights?

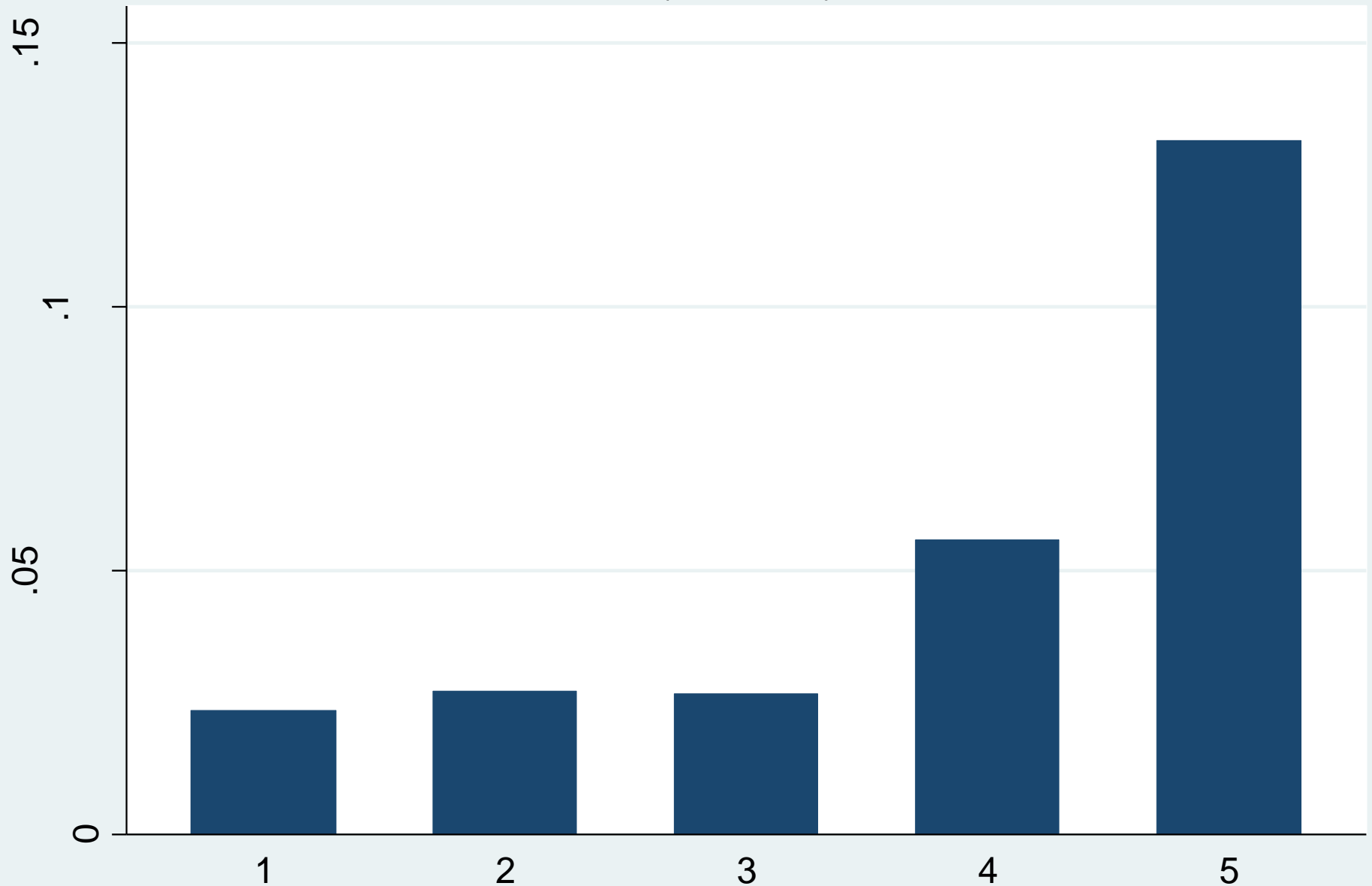


Alfred Peet

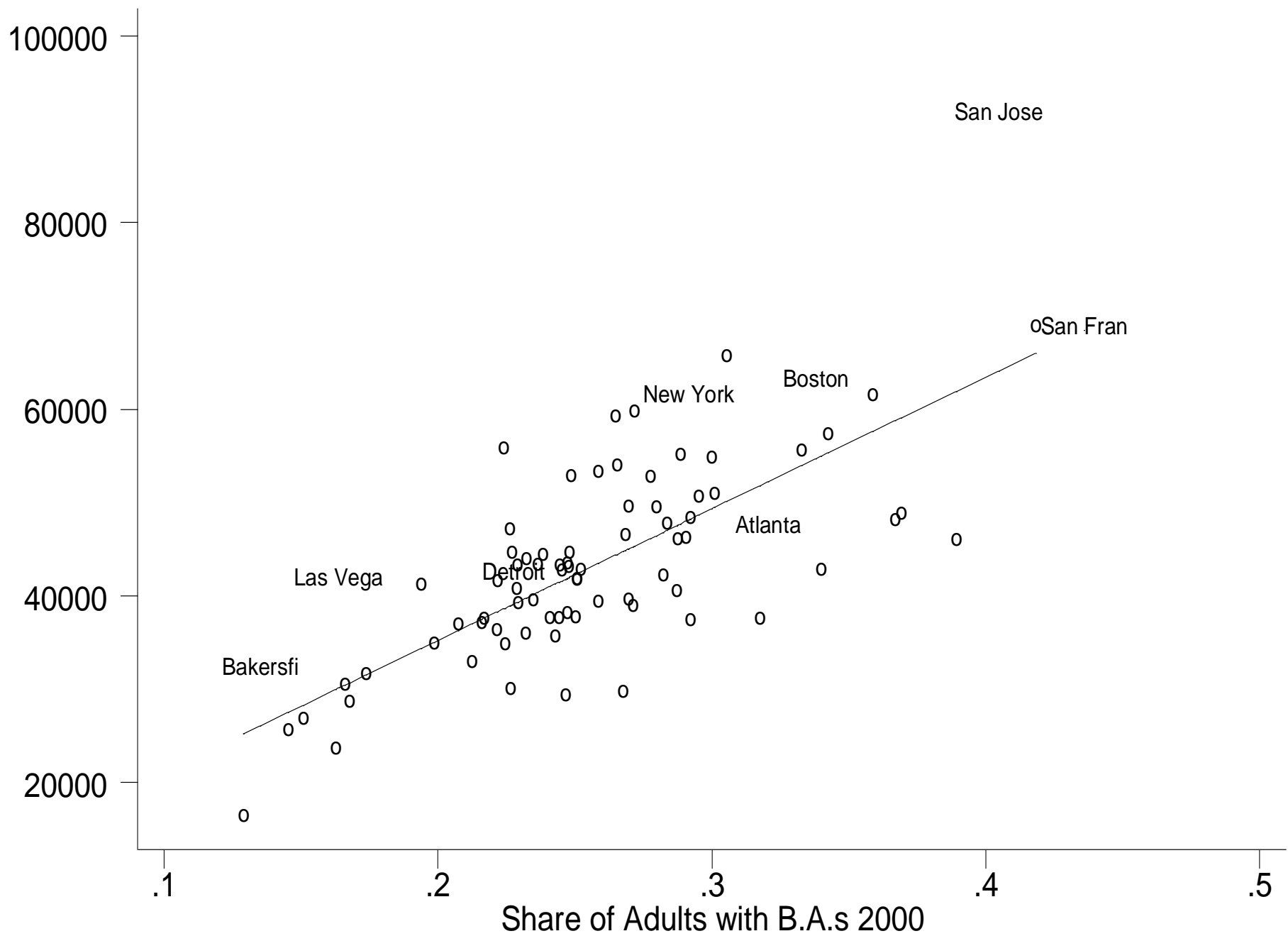


Photo by Postdil

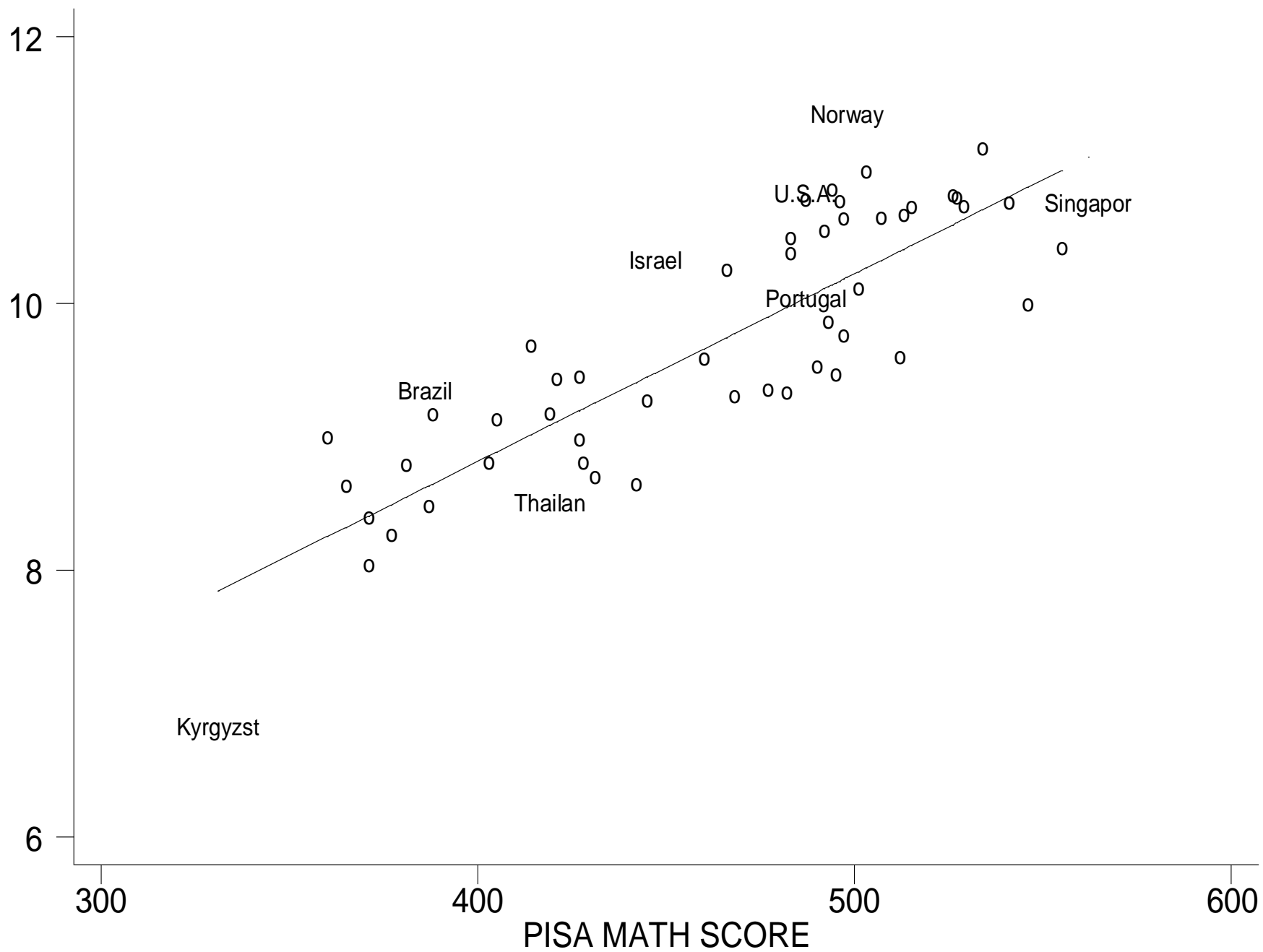
Average Population Growth by Share with BA in 2000  
(Quintiles)



# Per Capita GDP 2010



Log Per Capita GDP







From his experience on Wall Street, New York's Mayor Michael Bloomberg learned the value of face-to-face connection, and he turned City Hall into a wall-less bullpen that enables the speedy flow of information.

*Copyright City of New York, Used by  
Permission of the Office of the Mayor, City of  
New York*



Photo by Mario Roberto Duran Ortiz

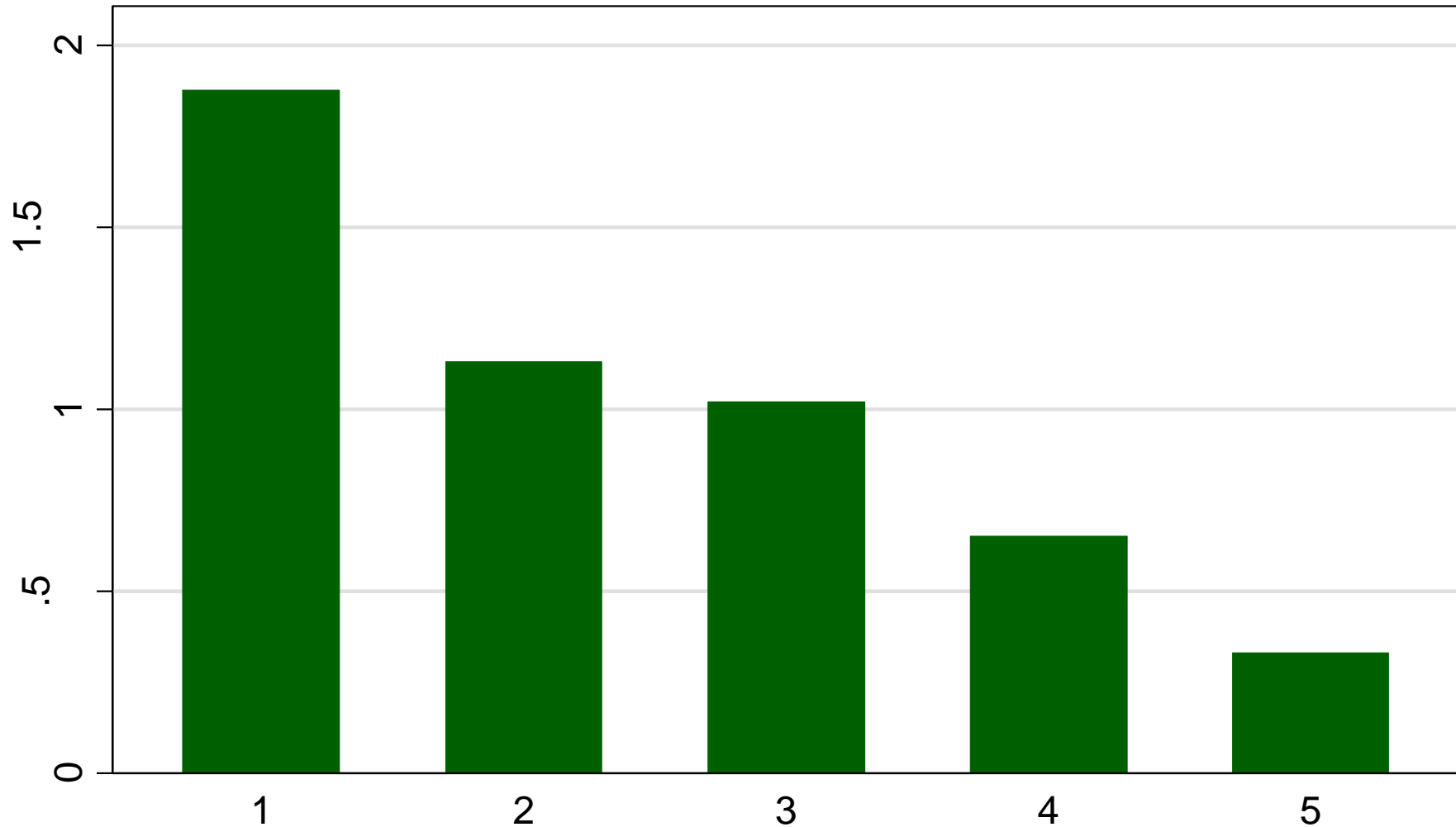


# Chinitz: Contrasts in Agglomeration: New York and Pittsburgh



# Economic Growth and Firm Size

MSA Employment Growth (1977-2010)  
by Average Firm Size (1977) Quintiles



Smallest firms are in Quintile 1

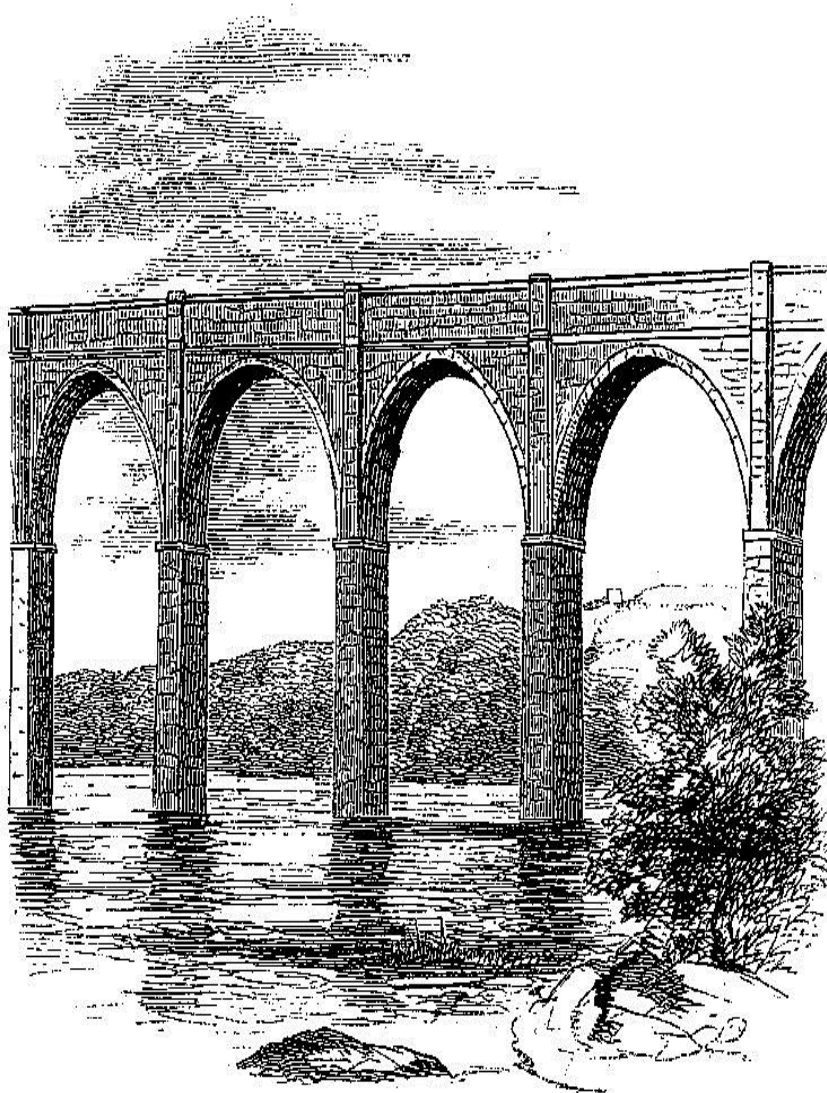


A man transports children through the bustle—and fetid streets—of Mumbai's Dharavi slum. Conditions like this are similar to those that faced many residents of Paris, London, New York, and other large cities in the nineteenth century. *Prashanth Vishwanathan / Bloomberg / Getty Images*





# Engineering vs. Economics



SECTION OF THE HIGH BRIDGE OVER THE HARLEM RIVER.





# The Curitiba Innovation



Picture by Mariordo



# The Ongoing Health Challenge



Picture by Peter



# The Rise of the Consumer City



Picture by Jorge Lascar



# The Physical City: NIMBYism vs. Monumentalism



Mumbai has recently begun building up, but the city is still short, expensive, and congested because of decades of overrestricting height. *Scott Eels / Bloomberg / Getty Images*



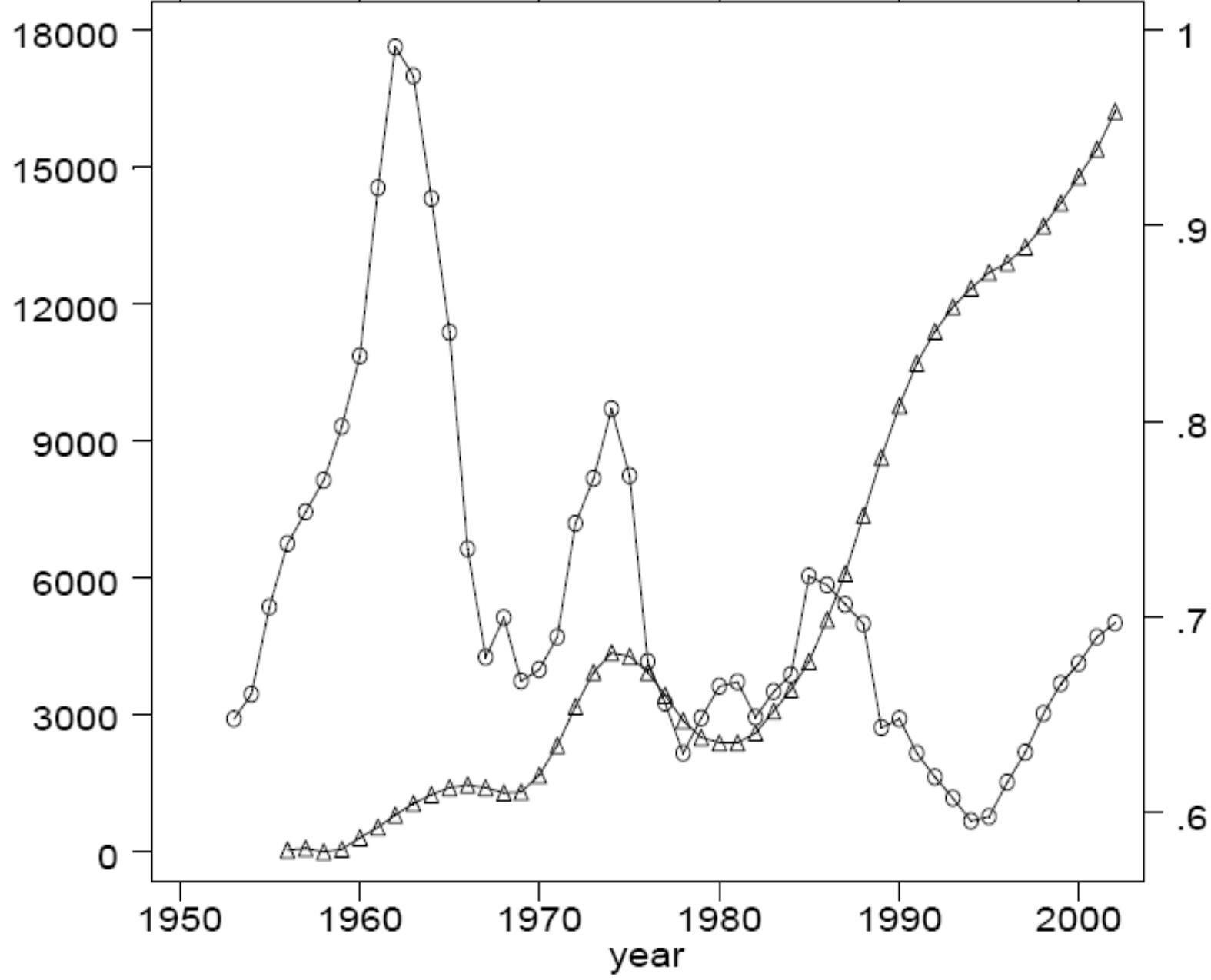
Astana by ChelseaFunNumberOne -

(Four-year moving averages)

○ Manhattan permits, units    △ Real housing prices

Manhattan permits, units

Real housing prices



The great urbanist Jane Jacobs looks none too happy with the tall buildings surrounding her. She argued vigorously against such high-rises and in favor of a low-slung cityscape like that of New York's Greenwich Village. Her arguments have not all proven correct.

*Bob Gomel/ Time & Life Pictures/Getty Images*



# Monumentalism in Asia

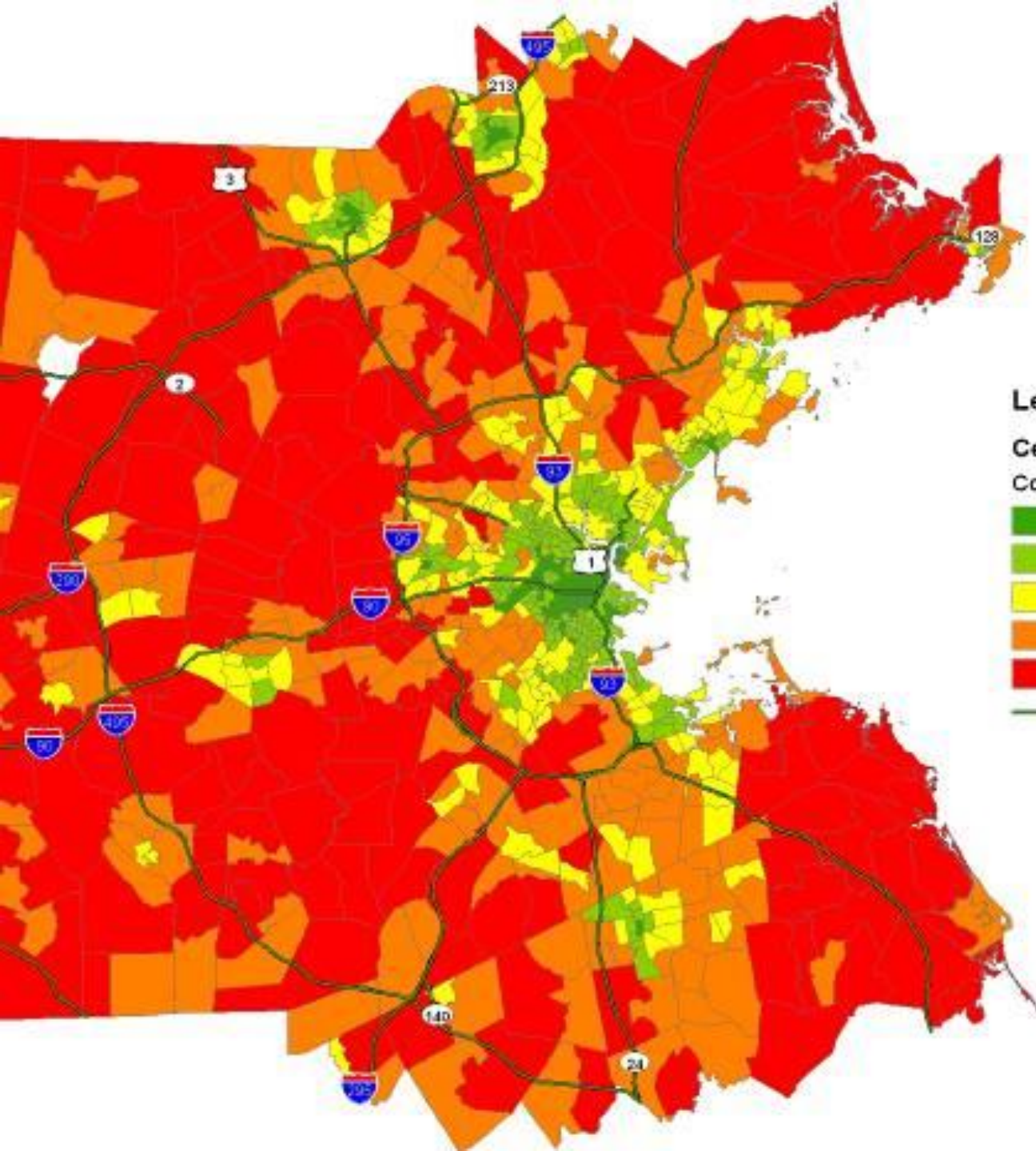






Image by QuarterCircleS





### Legend

#### Census Tracts Near Boston

##### Cost

- \$668.80 - \$898.06
- \$898.07 - \$1,044.30
- \$1,044.31 - \$1,179.42
- \$1,179.43 - \$1,324.81
- \$1,324.82 - \$1,557.26
- Primary Road, Limited Access

